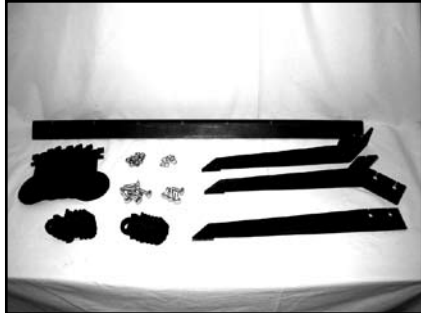
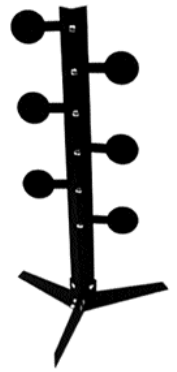


Rimfire Dueling Tree

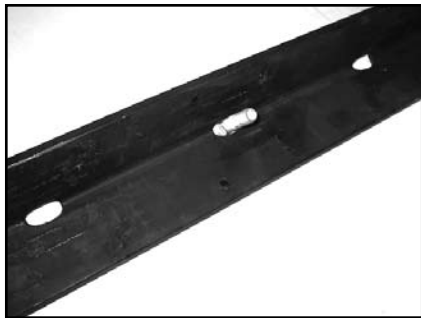
Assembly Instructions



Step #1

Gather the parts needed to assemble your Rimfire Dueling Tree:

6	DESIDGGH	□	2	1" carriage bolts	2821
1	stand	8162	2	1 ¼" carriage bolts	1245
6	top brackets	8163	6	1 ½" carriage bolts	5504
6	bottom brackets	8164	10	Hex nuts	1009
1	front foot	8165	4	Flat washers	1032
1	rear left foot	8166	10	Split lock washers	1096
1	rear right foot	8167	1	9/16" open end wrench (not included)	



Step #2

Insert a 1 ½" carriage bolt through one of the round holes from the "peaked" side of the angled stand.



Step #3

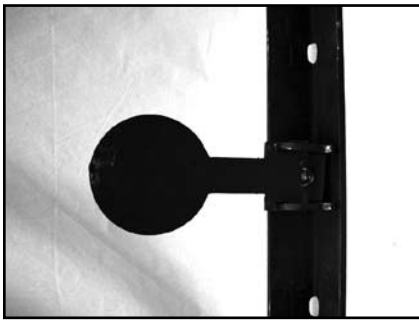
Place the bracket with target paddle over the carriage bolt. Install a split washer and nut onto the carriage bolt. Tighten the nut with a 9/16 wrench.



Step #4

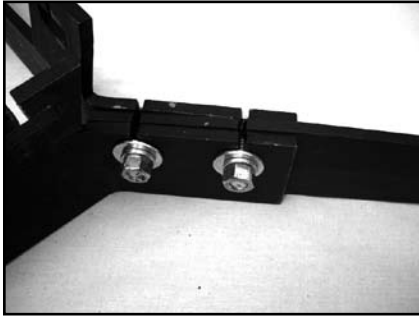
Situate the brackets with target paddle over the carriage bolt. Install a split washer and nut onto the carriage bolt. Tighten the nut with a 9/16 wrench.

Remaining instructions are on the back →



Step #5

Repeat steps 2-4 to attach the remaining 5 target paddles to the stand.



Step #6

Make sure you complete this step on a flat surface!

Take the two rear feet and set them side by side with the straight foot in the middle. Take two 1¼" bolts and push them through the holes of the feet. Put a flat washer and a split washer on each of the 2 bolts. Take 2 hex nuts and put them on each of the bolts and tighten firmly.



Step #7

Take the stand with the plates and attach it to the assembled feet by using 2 1" bolts, 2 flat washers, 2 split washers and 2 nuts. Tighten firmly.

Target Rating

The Rimfire Dueling Tree is rated for use with .22 rimfire and standard centerfire handgun rounds up to .44 caliber. Rounds larger than .22 rimfire may cause the paddles to bounce back to their original position. Do not use more powerful rounds. Do not use armor piercing rounds. Do not use any rifle rounds other than standard .22 rimfire.

Firearms Safety Rules

Before using your steel target, download and revise Action Target's Steel Target Safety Guide at <https://shop.actiontarget.com/content/steel-target-safety-rules.asp>.

1. Treat all firearms as if they were loaded
2. Never point a firearm at anything you are not willing to destroy
3. Keep your finger off the trigger until you are ready to fire
4. Be aware of your target area, backstop, and general environment

Steel Target Safety Rules

1. Always obey the Firearms Safety Rules listed above
2. Always wear ear protection and wrap-around eye protection
3. Always stand at least 15 yards from the target
4. Always use soft-nosed ammunition
5. Never use more powerful ammunition than the target is rated for
6. Never shoot on steel that is cratered, pitted, or damaged in any way

Using a firearm can be an inherently dangerous activity. Action Target accepts no responsibility for damages and/or injury sustained from the use or misuse of this product.